

Planmed Clarity

Digital Breast Tomosynthesis



Medical imaging excellence

Planmed is strongly committed to improving the early detection of breast cancer. Our mission is to provide top quality imaging systems for mammographic diagnosis.

This dedication to mammography has inspired us to constantly develop new, innovative solutions for breast imaging.

*Today, we have taken a huge step forward by introducing a completely new Digital Breast Tomosynthesis (DBT) system. **Planmed Clarity™ 3D** will set a new standard for 3D breast imaging.*

See more – with Clarity!

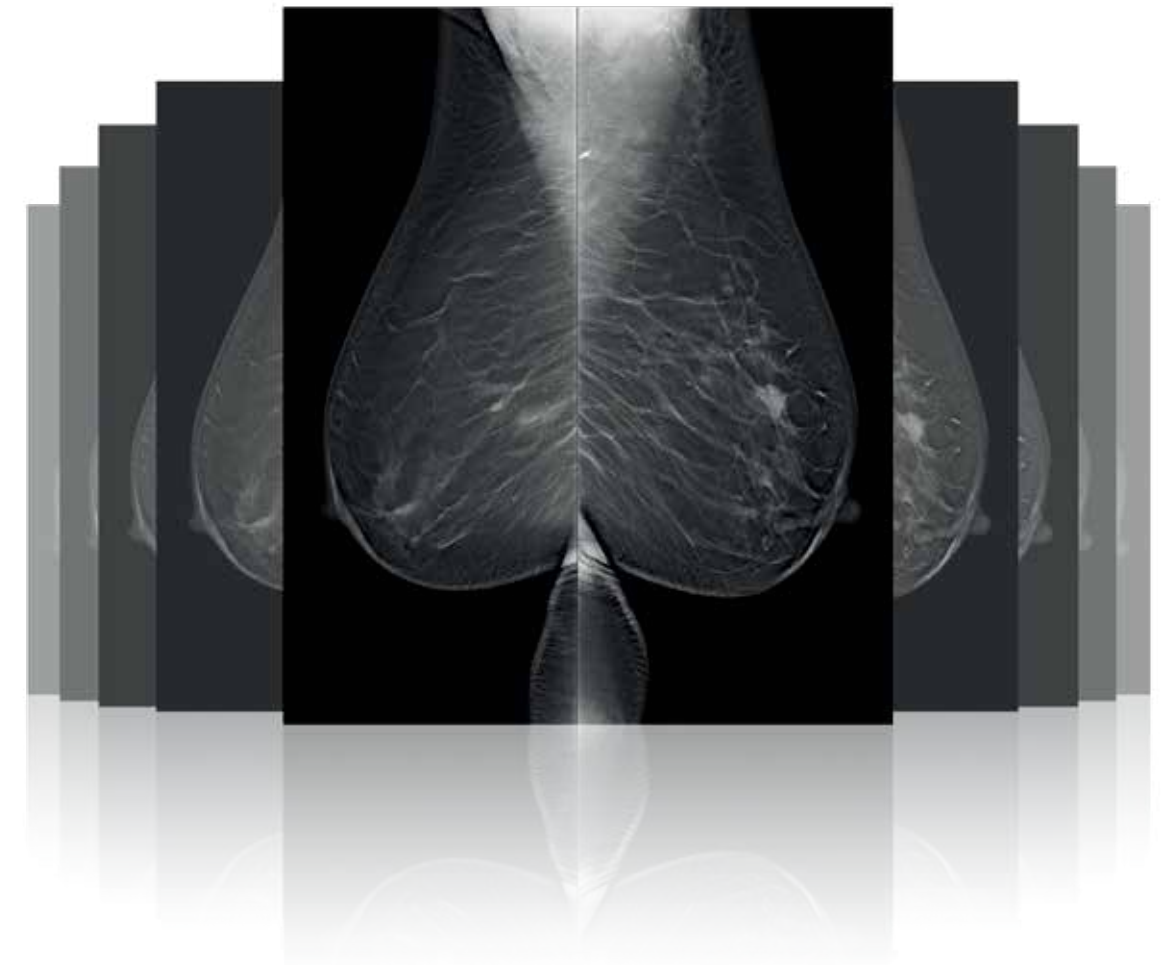


Digital Breast Tomosynthesis for all



Digital Breast Tomosynthesis is an emerging and effective technology for breast cancer detection. In many studies, DBT has shown potential to increase sensitivity and decrease unnecessary recalls.

*With **Planmed Clarity™ 3D**, we aim to make affordable DBT available for breast clinics around the world. Packaged in eye-catching yet functional design, it is truly a unit for all.*

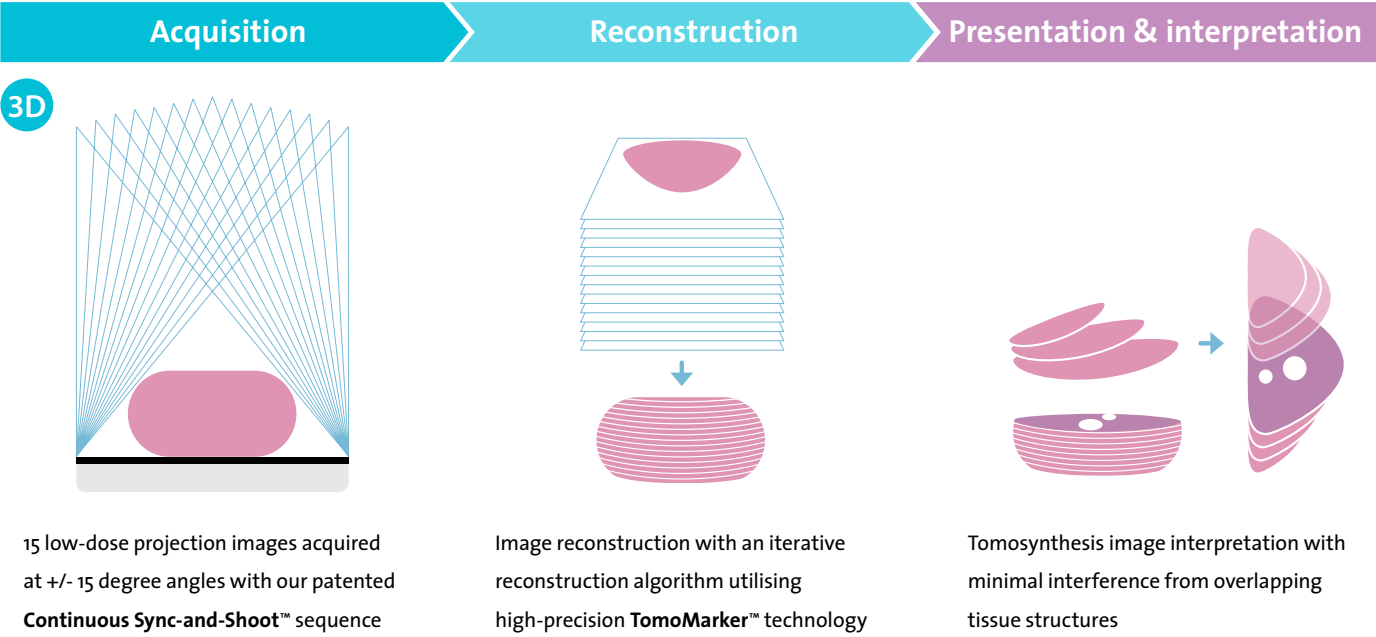
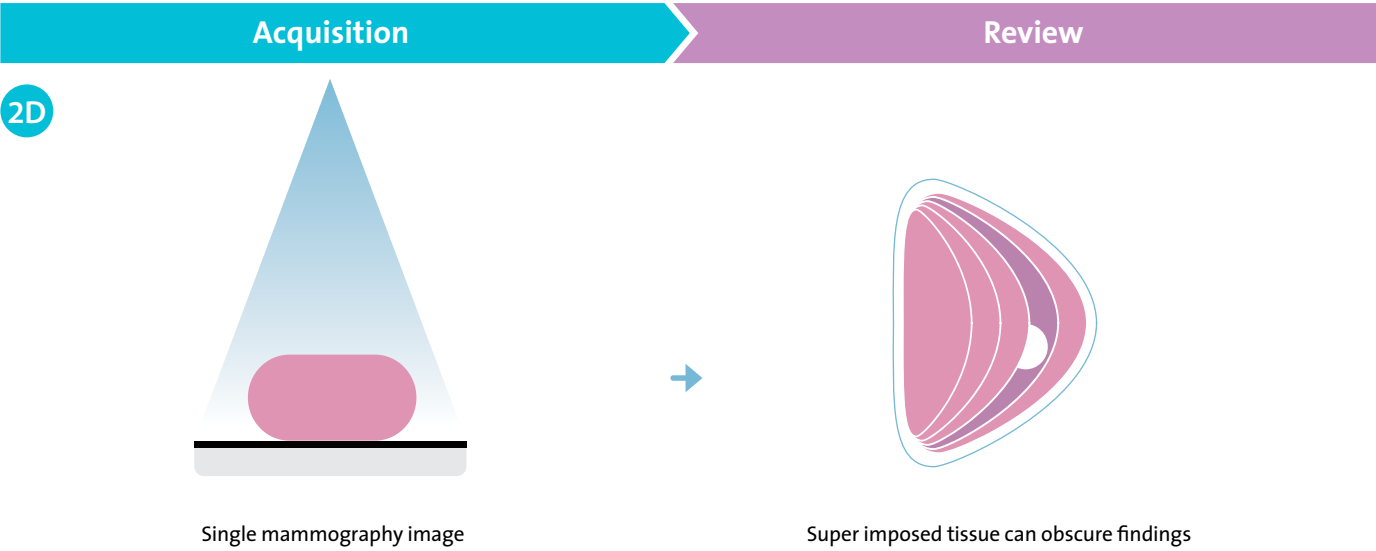


See more with Planned DBT

Digital Breast Tomosynthesis with Planned Clarity™ 3D

Superimposed tissue structure can severely impair breast cancer detection in a traditional mammogram.
Planned Clarity™ 3D offers an unforeseen solution to this fundamental challenge in breast cancer detection.

2D versus 3D

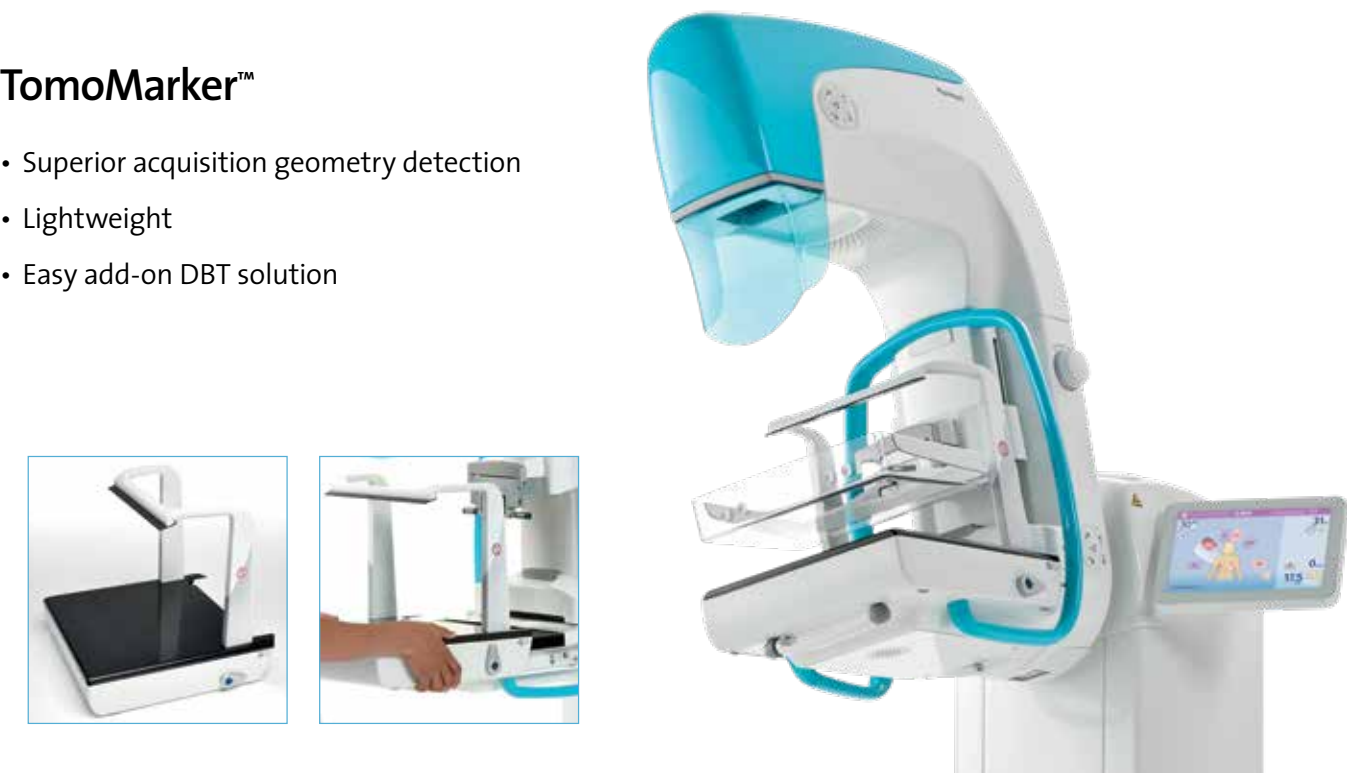


Planned DBT technology

The clear images **Planned Clarity™ 3D** provides are achieved by using our unique **Continuous Sync-and-Shoot™** movement and innovative **TomoMarker™** technology.

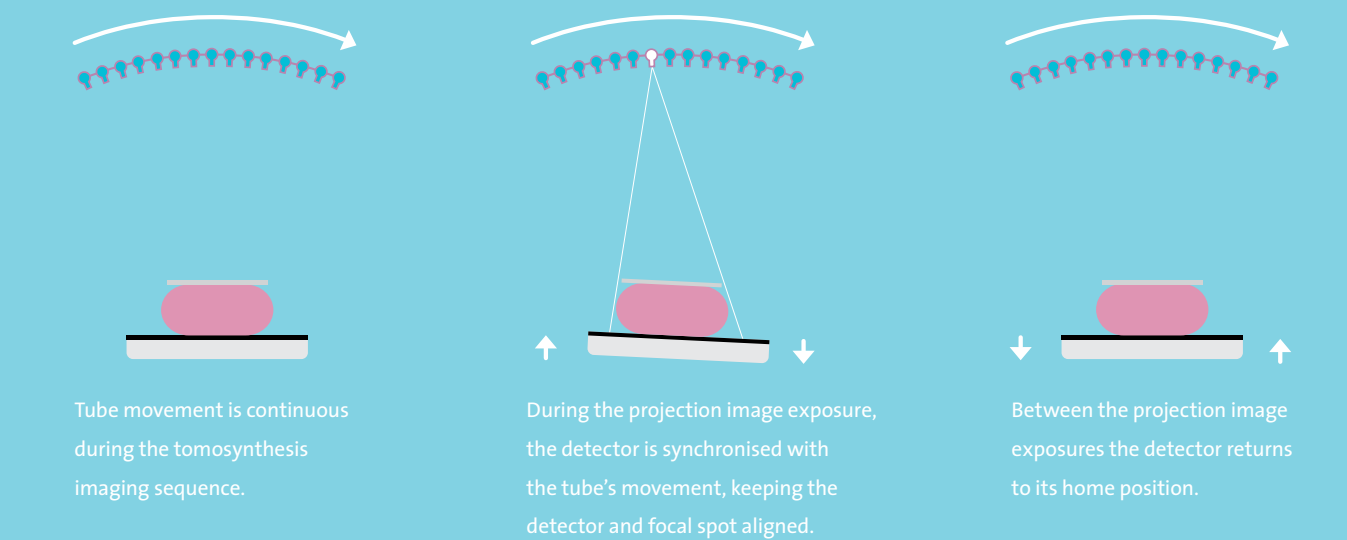
TomoMarker™

- Superior acquisition geometry detection
- Lightweight
- Easy add-on DBT solution



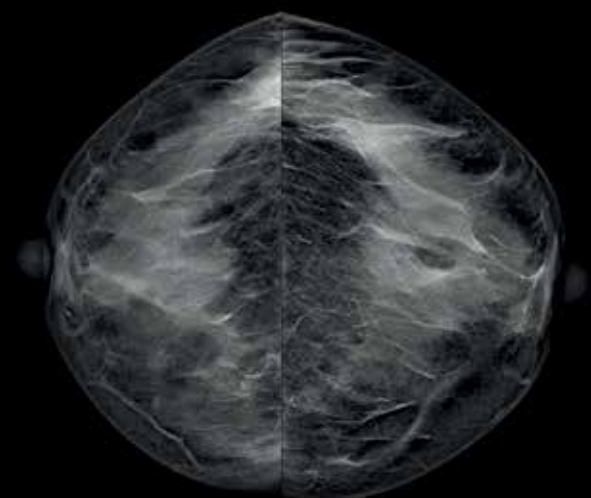
Continuous Sync-and-Shoot™

Our patented **Continuous Sync-and-Shoot™** imaging sequence enables sharp, motion-blur-free images that highlight delicate structures and microcalcifications.



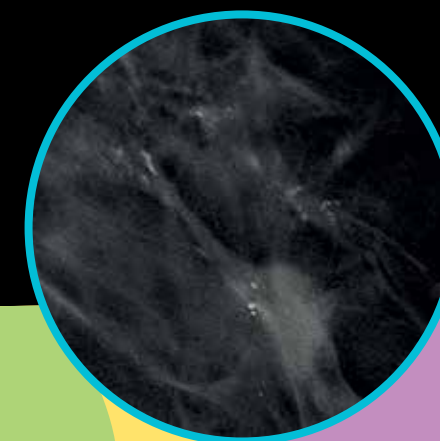
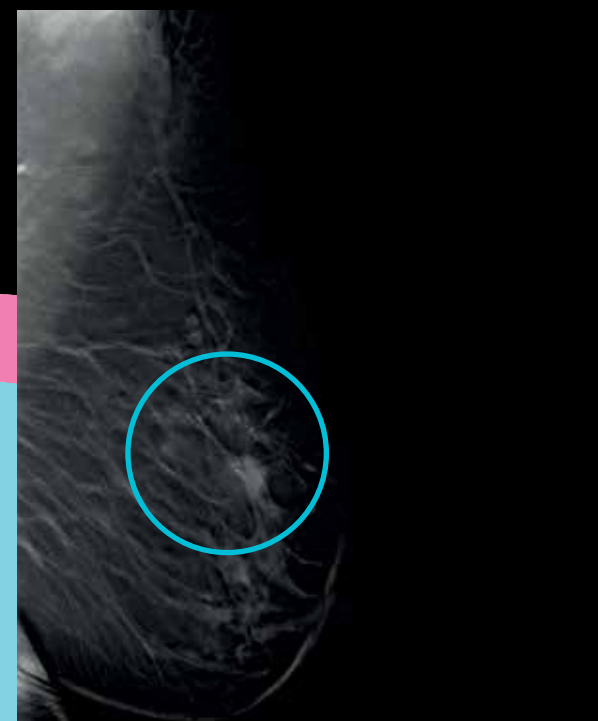
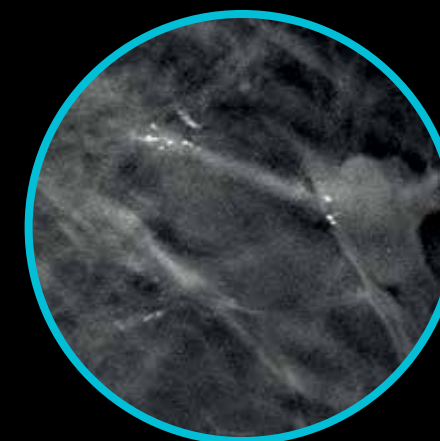
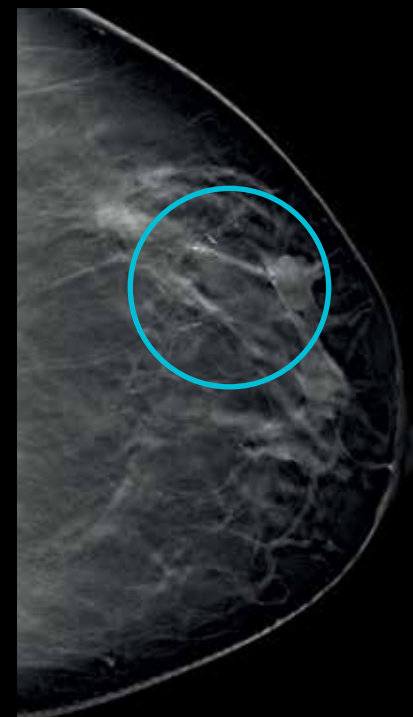
Perfected DBT image

With Digital Breast Tomosynthesis, you can see into and beyond tissue structures, enabling accurate diagnosis even with dense breast tissue cases.



Tailored image quality

***Planmed Clarity™ 3D** has an outstanding image quality that adapts image processing to a radiologist's preferences. Image post-processing can be tailored to a radiologist's needs individually.*



Unique Planmed innovations



- TomoMarker™ technology**
Clear and sharp artefact-free images with Digital Breast Tomosynthesis
- Configurable dual touchscreen displays**
*Perfect usability for fast and easy daily work with the **Planmed Clarity™ Flow** touch control*
- Full Field Flex-AEC™**
Large AEC area coverage for optimal imaging in every imaging mode
- Rugged detector & ultra compact bucky**
Steady and durable detector with ultra compact bucky for easy patient positioning
- MaxView™ breast positioning system**
Maximal tissue visibility for enhanced diagnostics
- SideAccess™ patient positioning system**
Optimal ergonomics for patient positioning

An encouraging experience

Planmed's mammography units are created with utmost attention to detail. We feel it is our duty to design equipment that helps make breast exams as easy and encouraging as possible.

We have included personalised colours, curved chin guards and extended handles to improve patient comfort. The dual touch-screens with customisable colours ease the daily work of technologists. We hope you like the result.



Work smarter with Planmed Clarity™ Flow

The **Planmed Clarity™ Flow** touch control will completely change your mammography experience. It is a completely new and unique way to access unit functions in an easy-to-learn environment. Planmed Clarity Flow offers a customisable mammography workflow solution for all – from beginners to more advanced mammographers.

Excellent usability

Adaptable, adjustable, touchable – these are the best words to describe the most striking addition to the design of the new line of Planmed mammography products. The **Planmed Clarity™ Flow** touch control with dual touchscreens provides a clear and simplified user experience. You can now display a reference mammogram at the unit to aid positioning, for example, or use your own individual workflow sequence.

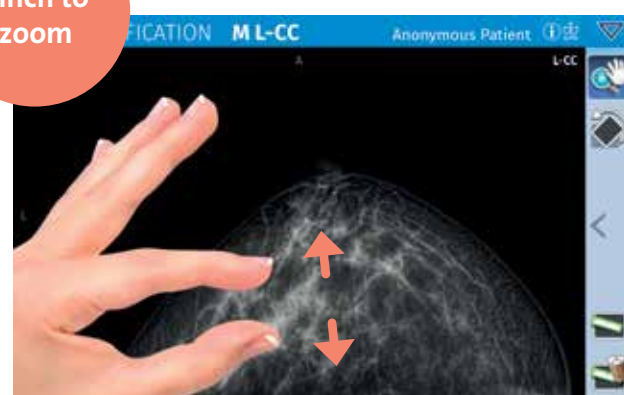
On-screen guide



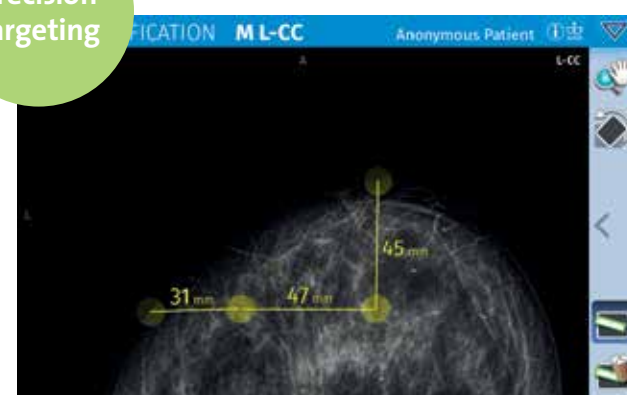
OneTouch™ workflow



Pinch to zoom



Precision targeting



Optimal ergonomics

Positioning a patient for a mammogram often requires awkward posture, and in the long term users can suffer from repetitive stress injuries. To enhance wellbeing, **Planmed Clarity™ 3D** is full of features that improve positioning ergonomics.

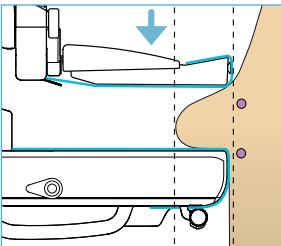
Key Features

- **SideAccess™** patient positioning
- Manual compression
- Curved, contoured chin guard
- Extended patient handlebars
- New adjustable touchscreen displays
- Multipurpose base with colour display
- Ultra compact bucky
- Optimal axial compression

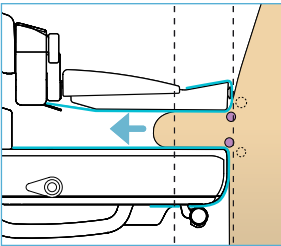


Unique MaxView™

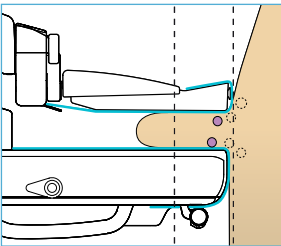
Our patented **MaxView™** breast positioning system enables optimal breast tissue visibility in all routine mammography views and tomosynthesis.



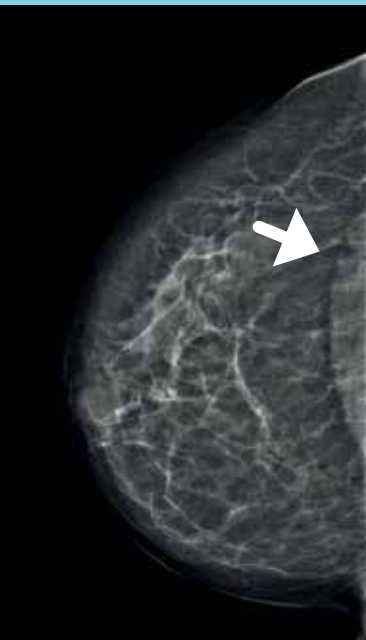
The innovative **MaxView™** uses moving, hygienic, radiolucent sheets above and below the compressed breast.



During compression, gentle traction is applied and the sheets draw the breast into the imaging field.



MaxView™ helps to capture tissue in the field of view.



Right Cranio Caudal (RCC) view with **MaxView™** applied. More breast is visible in the image, including the pectoral muscle (arrow).



Right Medio-Lateral Oblique (RML) view with **MaxView™** applied. The inframammary fold and significantly more pectoral muscle are visible in the image (arrow).

The complete Digital Breast Tomosynthesis system

Planmed Clarity™ 3D is a complete Digital Breast Tomosynthesis system. It features a new acquisition workstation with the **Planmed Clarity™ Manager** software, and an optional motorised imaging station.

Complete harmony

With the **Planmed Clarity™ 3D** system you can do everything – from fast 2D imaging to accurate 3D diagnostic procedures.

The **Planmed Clarity™ Manager** and **Planmed Clarity™ Flow** software are easy to learn and use. They ensure that you can fully concentrate on patient care at all times.



Ultimate diagnostic confidence with the Planmed review workstation

*The optional Planmed review workstation is a multimodality diagnostic reading station. The elegant and simple interface with the optional **Planmed DigiPad™** shortcut keyboard guarantees a fast workflow in all situations.*



Express yourself with exciting colours

Give your **Planmed Clarity™ 3D** Digital Breast Tomosynthesis system a personal touch by combining its eye-catching design with your favourite colour. Pick the perfect one from our lively collection and create an inspiring look you can be proud to call your own!

Ocean

Peach

Sunflower

Lime

Orchid





Planmed Oy develops, manufactures and markets advanced imaging equipment and accessories for mammography and orthopedic imaging. Planmed's extensive mammography product range covers Digital Breast Tomosynthesis and full field digital systems, analog units, stereotactic biopsy devices, and breast positioning systems for an early detection of breast cancer. Within orthopedic 3D imaging Planmed offers low dose extremity CT imaging for quicker, easier and more accurate diagnosis at the Point-of-Care.

Planmed

Planmed Oy Sorvaajankatu 7 | 00880 Helsinki | Finland | tel. +358 20 7795 300 | fax +358 20 7795 664 | sales@planmed.com | www.planmed.com

Planmed Clarity 3D is not commercially available for sale in the USA.
Images may contain optional items not included in the standard delivery. Rights for changes reserved.

